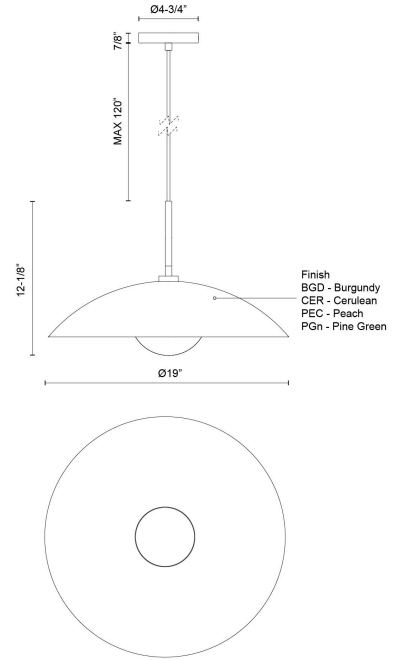


Regent 19-in Pendant

Model	Bulbs (not included)	Wattage (or equivalent)
PD56019 PD56019-BGD PD56019-CER PD56019-PEC PD56019-PGN	1 x E26	60W

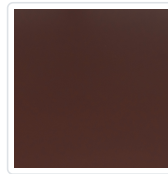


The Regent collection offers a refined blend of timeless design and modern color options, featuring a curated palette of neutral undertones. Its classic wide dome shade, paired with a softly glowing opal diffuser, exudes elegance while maintaining a fresh, contemporary vibe. Regent's versatile style adds a subtle yet impactful pop of color to any room.

SPECIFICATION DETAILS

Fixture Dimensions	D19" x H12-1/8"
Canopy Dimensions	D4-3/4" x H7/8"
Minimum Hang Height	15"
Location	Dry
Glass Details	Opal Glass
Illumination Direction	Down
Light Source/Life	Socket
Material	Steel, Glass
Sloped Ceiling Adaptable	Yes
Shade Details	Steel Shade
Wire Length	120"
Wire Style	Color Matching Braided Wire
Compliance	UL Certified: Yes

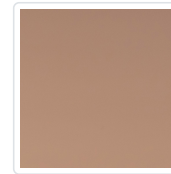
FINISHES



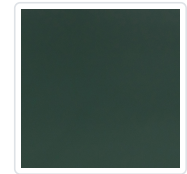
Burgundy
(BGD)



Cerulean
(CER)



Peach
(PEC)



Pine Green
(PGN)

* For custom options, contact customer service.

* For warranty information, please visit www.kuzcolighting.com/warranty

WWW.KUZCOLIGHTING.COM

USA: 3035 E. LONE MOUNTAIN ROAD - LAS VEGAS, NV 89081

CANADA: 19054 28TH AVENUE - SURREY, BC V3Z 6M3

© 2024 KUZCO LIGHTING. ALL RIGHTS RESERVED

20241210

Kuzco Lighting reserves the right to modify the design of our products at any time, as part of our ongoing commitment to continuous improvement.